

T SERIE

english

italiano

français

deutsch

español

nederlands

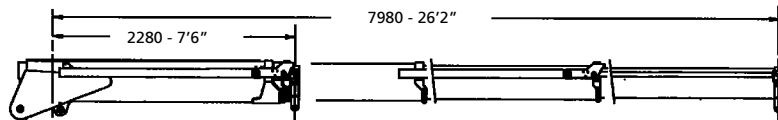


cranes without compromise

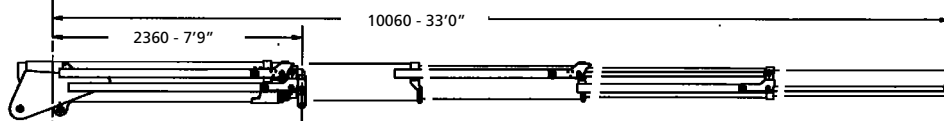
FASSI

CRANES WITHOUT COMPROMISE

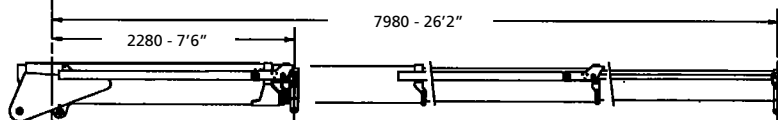
F130AT.13
F150ATXP.13



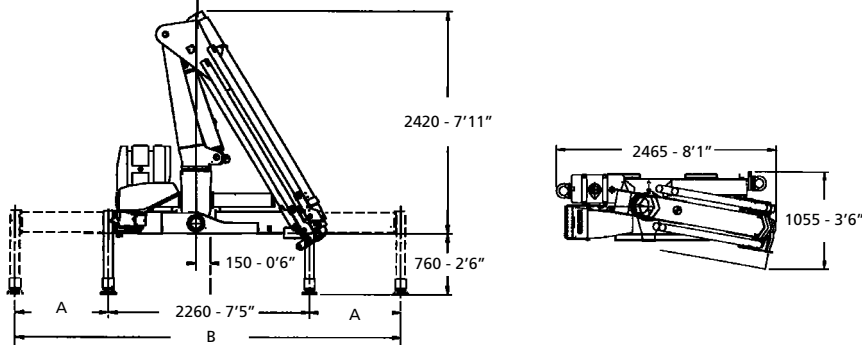
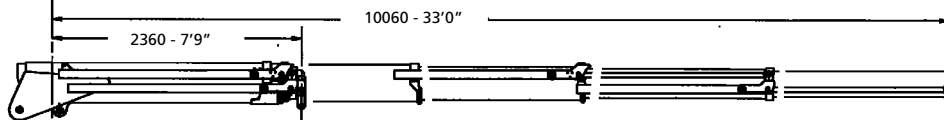
F130AT.14
F150ATXP.14



F170AT.13
F190ATXP.13

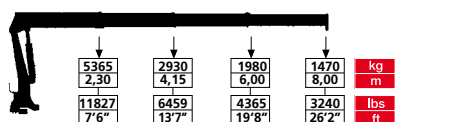


F170AT.14
F190ATXP.13

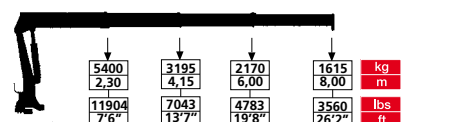


| | STANDARD | EXTRA | SUPEREXTRA |
|---|------------|------------|------------|
| A | 1165 3'10" | 1780 5'10" | 2180 7'2" |
| B | 4590 15'1" | 5820 19'1" | 6620 21'8" |

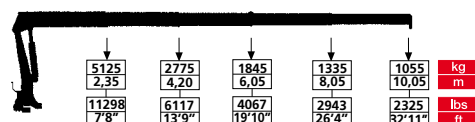
F130AT.13



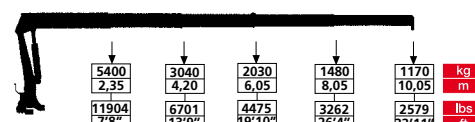
F150ATXP.13



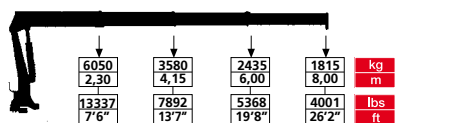
F130AT.14



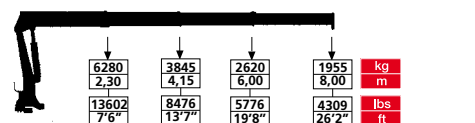
F150ATXP.14



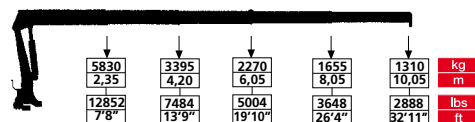
F170AT.13



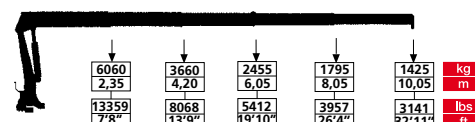
F190ATXP.13



F170AT.14



F190ATXP.14



| | tm | lbs.ft | m | ft | ° | kNm | lbs.ft | Mpa | psi | l/min | gal/min | l | gal | kg | lbs |
|-------------|------|--------|-------|--------|-----|------|--------|------|------|-------|---------|----|------|------|------|
| F130AT.13 | 12,3 | 88966 | 8,00 | 26'2" | 390 | 17,6 | 12985 | 26,5 | 3850 | 40 | 11,0 | 60 | 16,0 | 1585 | 3494 |
| F130AT.14 | 12,0 | 86796 | 10,05 | 32'11" | 390 | 17,6 | 12985 | 26,5 | 3850 | 40 | 11,0 | 60 | 16,0 | 1720 | 3792 |
| F150ATXP.13 | 13,3 | 96199 | 8,00 | 26'2" | 390 | 17,6 | 12985 | 28,5 | 4140 | 40 | 11,0 | 60 | 16,0 | 1585 | 3494 |
| F150ATXP.14 | 12,8 | 92582 | 10,05 | 32'11" | 390 | 17,6 | 12985 | 28,5 | 4140 | 40 | 11,0 | 60 | 16,0 | 1720 | 3792 |
| F170AT.13 | 14,9 | 107772 | 8,00 | 26'2" | 390 | 21,5 | 15862 | 31,5 | 4570 | 40 | 11,0 | 60 | 16,0 | 1630 | 3593 |
| F170AT.14 | 14,3 | 103432 | 10,05 | 32'11" | 390 | 21,5 | 15862 | 31,5 | 4570 | 40 | 11,0 | 60 | 16,0 | 1795 | 3957 |
| F190ATXP.13 | 16,0 | 115728 | 8,00 | 26'2" | 390 | 21,5 | 15862 | 32,5 | 4720 | 40 | 11,0 | 60 | 16,0 | 1630 | 3593 |
| F190ATXP.14 | 15,4 | 111388 | 10,05 | 32'11" | 390 | 21,5 | 15862 | 32,5 | 4720 | 40 | 11,0 | 60 | 16,0 | 1795 | 3957 |

Dati e dimensioni sono forniti a titolo indicativo e non impegnativo - Toutes les données et descriptions sont fournies à titre indicatif, sans engagement - Unverbindliche Angaben, Konstruktionsänderungen vorbehalten
Data and descriptions are approximate and not binding - Datos y descripciones todos a título indicativo y no imperativo - Specificaties zijn niet bindend, wijzigingen derhalve voorbehouden



FASSI GRU S.p.A. - Via Roma, 110 - 24021 Albino (Bergamo) ITALY
Tel: +39 035 776400 - Fax +39 035 755020
http://www.fassigroup.com E-mail: fassi@fassigroup.com

